
Before you begin

- Check for and read any README file on the CD-ROM because it may contain late-breaking information.
- You will have the option of installing Adobe Acrobat Reader and Paint Shop Pro with the installation of AlphaNET™ 2.0. Simply click the appropriate yes or no response when the prompt to do so appears. **Please note that you will not be able to view or print the manual located on the CD-ROM and in the software program unless you have Adobe Acrobat Reader installed on your PC.**

Printing the manual

There are two ways you can print the manual:

Before installing AlphaNET™ 2.0

1. Insert the AlphaNET™ 2.0 software CD-ROM into your CD drive. If the installation process starts automatically, click the *Cancel* button when the *Welcome* screen appears.
2. Using Windows® Explorer, open the CD-ROM drive folder and then double-click the **Manual.pdf** file. The manual will open in Adobe Acrobat Reader.
3. To print the manual, click the *Print* button.

You can also right-click on the **Manual.pdf** file and select *Print* from the pop-up menu.

After installing AlphaNET™ 2.0

Select *Start>Programs>AlphaNET>On-Line Manual* and, when the manual opens in Adobe Acrobat Reader, click the *Print* button.

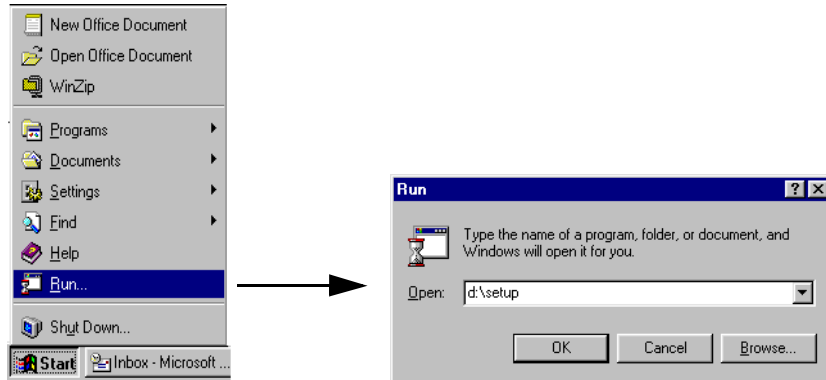
Online help is also available in the Help drop-down menus of AlphaNET™ 2.0.

Installing the software

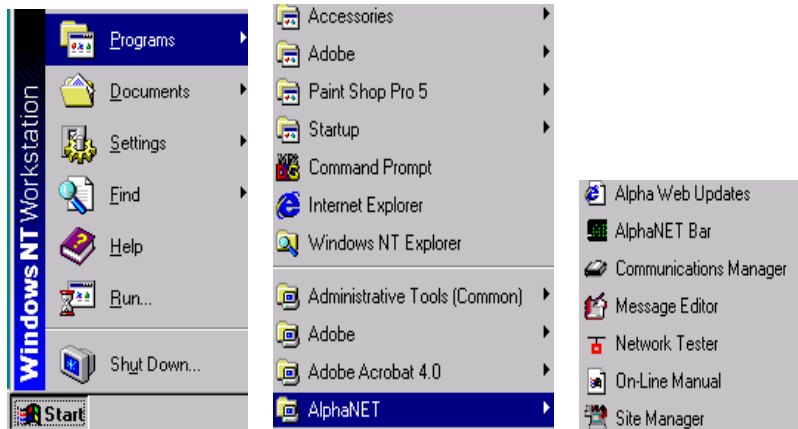
1. Start Microsoft Windows® software and be sure to have all other applications closed.
2. Insert the AlphaNET™ 2.0 software CD-ROM into your CD drive. The installation process will start automatically.

If installation does not start automatically, you can either:

- Select *Start>Run*. Next type *d:\setup* using the correct letter for your CD drive if not *d*. Then select *OK*.



- Using Windows® Explorer, double-click *Setup.exe* in your CD-ROM drive folder.
3. Follow the instructions when the installation program prompts you for a response.
 4. When the installation program is done, AlphaNET™ appears in your *Start* menu. If you select the AlphaNET™ bar (*Start>Programs>AlphaNET>AlphaNET Bar*), you will have access to *Message Editor*, *Site Manager*, *Communications Manager*, *Paint Shop Pro*, and *Paint Shop Pro Animation* at the click of a button. (If you clicked the appropriate box during the install, the AlphaNET™ bar appears automatically when you log onto your PC.)



Right-click anywhere in this area of the AlphaNET™ bar and select *Change Skin* to choose a different color scheme for the bar.

