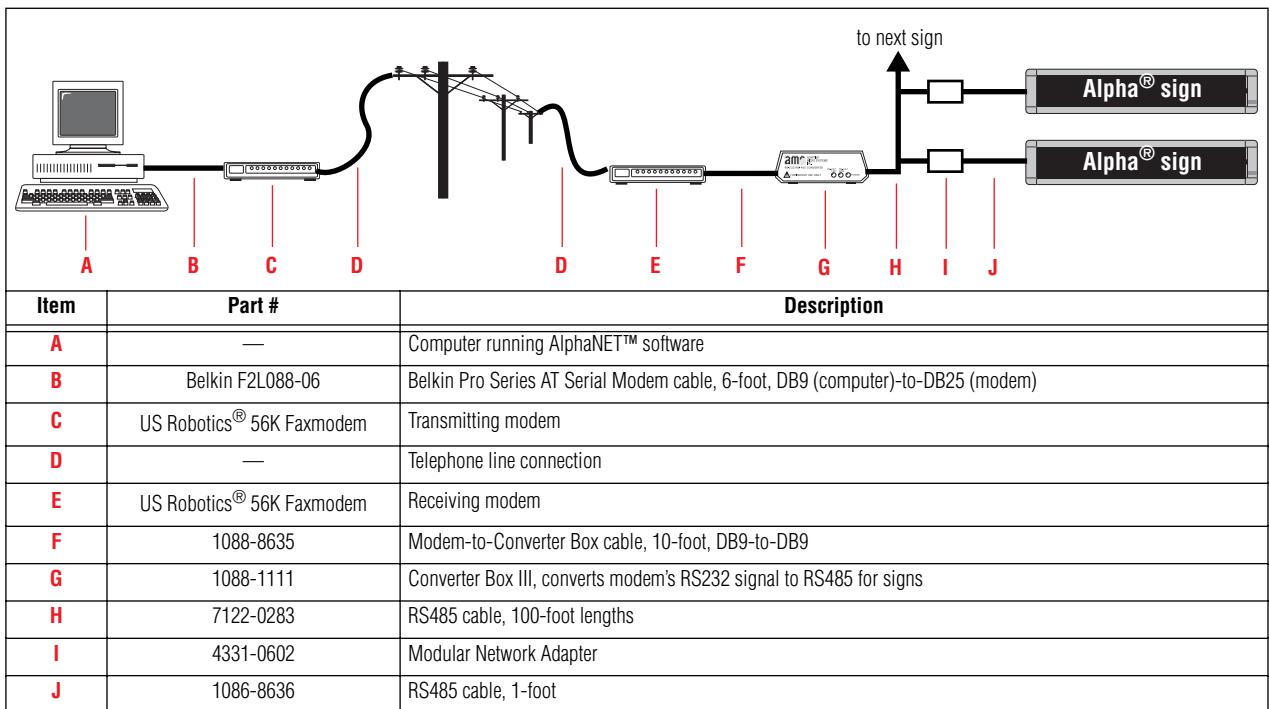


<b>PRIORITY:</b>	Normal
<b>DATE:</b>	November 1, 2001
<b>TITLE:</b>	Modem Setup for Alpha® signs
<b>ECO REFERENCE:</b>	N/A
<b>PRODUCT(S) AFFECTED:</b>	All Alpha® signs capable of receiving data using a modem
<b>SUMMARY:</b>	These instructions show how to set up a US Robotics® 56K Faxmodem as both a Transmitting and a Receiving modem. This TechMemo replaces TechMemo #97-0012.

### How modems are used with Alpha® signs

Messages can be sent from a computer running AlphaNET™ software to one or more signs using at least two modems: a Transmitting modem and a Receiving modem.



© Copyright 2001 Adaptive Micro Systems, Inc. All rights reserved.

Adaptive Micro Systems • 7840 North 86th Street • Milwaukee, WI 53224 USA • 414-357-2020 • 414-357-2029 (fax) • <http://www.adaptivedisplays.com>

The following are trademarks of Adaptive Micro Systems: Adaptive, Alpha, AlphaNet plus, AlphaEclipse, AlphaPremiere, AlphaTicker, AlphaVision, AlphaVision InfoTracker, Automode, BetaBrite, BetaBrite Director, BetaBrite Messaging Software, Big Dot, PPD, Smart Alec, Solar, TimeNet

The distinctive trade dress of this product is a trademark claimed by Adaptive Micro Systems, Inc.

Due to continuing product innovation, specifications in this manual are subject to change without notice.

## Modem configuration

- A modem must be connected to a computer in order to set up the modem:

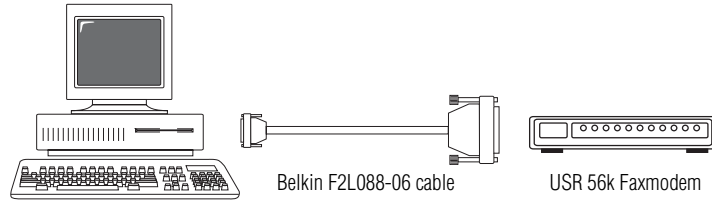


Figure 1: Computer-to-modem connection

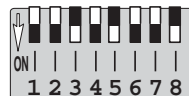
- US Robotics® *Control Center* software (shown below), included with the modem, is used to set up a modem. *Don't run this software until instructed to.*

**NOTE:** If you do NOT have the Control Center software, see "Modem configuration - Plan B" on page 6.



## Transmitting modem

The default or factory settings should work fine for the Transmitting modem. Following are the *factory settings* for the modem's DIP switches:



3, 5, 8 = ON  
1, 2, 4, 6, 7 = OFF

## Receiving modem

The Receiving modem needs to have:

- DIP switch changes
- Special “AT” command sent to it

### DIP switch changes

1. With the modem turned off, change to modem’s DIP switches to the following:

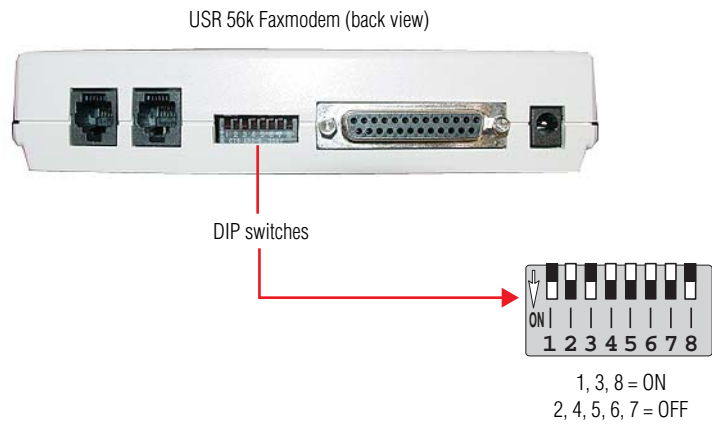
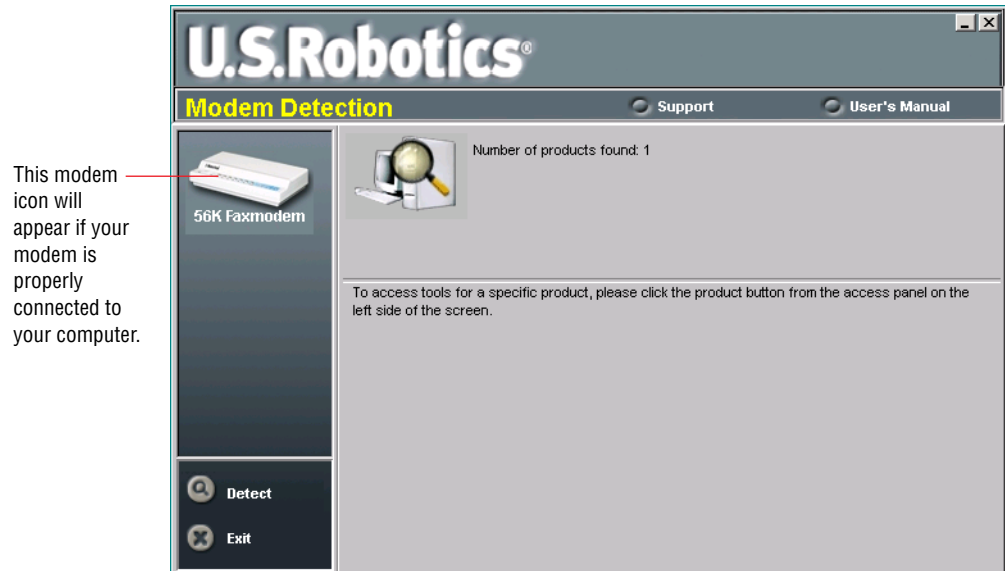


Figure 2: Receiving modem DIP switch settings

### Special AT command

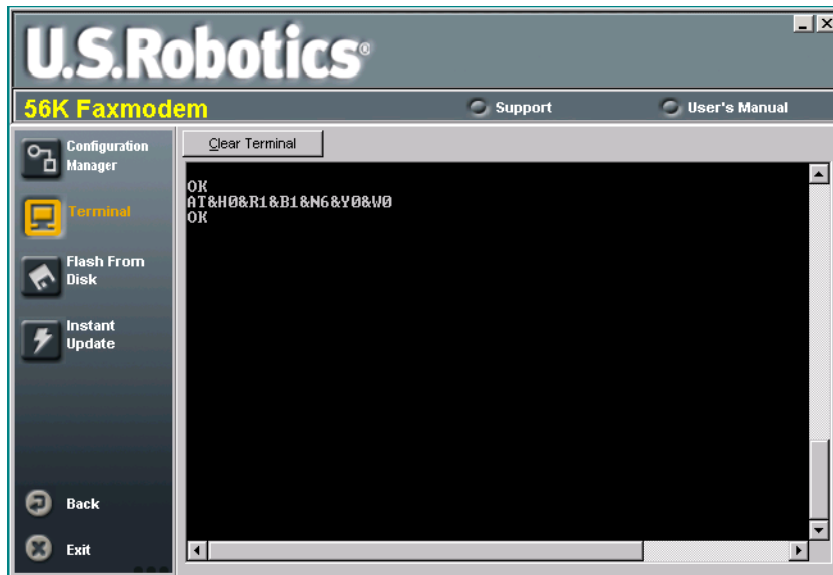
2. Connect the modem to the computer as shown in Figure 1.
3. Install the *Control Center* software on your computer. Then start this software:



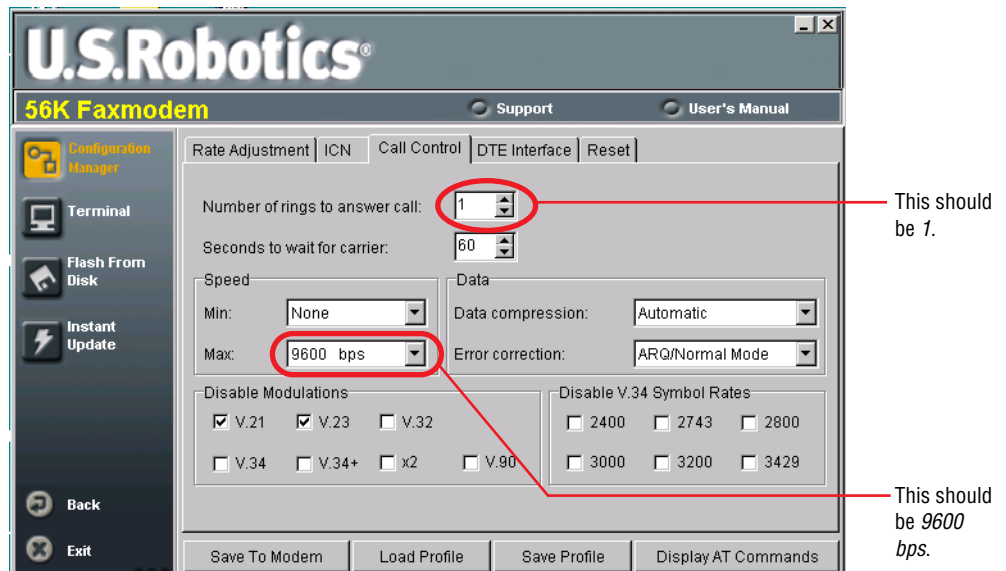
- Click on the *56k Faxmodem* icon and then the *Terminal* icon. Type the following AT command exactly as shown below. Then press the **Return** key.

**Table 1: Special AT command**

<code>AT&amp;H0&amp;R1&amp;B1&amp;N6&amp;Y0&amp;W0</code>					
Disables flow control	Modem ignores RTS	Fixed serial port rate	Connection speed = 9600 baud	Loads Profile 0 into NVRAM when modem is powered on.	Writes this current setup to Profile 0 in nonvolatile memory (NVRAM)



- Check to see whether the AT command was successful. Click on *Configuration Manager* > *Call Control*:



Then click on *DTE Interface*:

**U.S. Robotics®**  
**56K Faxmodem**    Support    User's Manual

Configuration Manager    Terminal    Flash From Disk    Instant Update    Back    Exit

Rate Adjustment    ICN    Call Control    **DTE Interface**    Reset

**DTR**  
 Normal  
 On-line command mode  
 **Ignore DTR**  
 Reset on DTR Drop

**DCD**  
 Normal  
 Always on

**DSR**  
 Override  
 High on ANS tone

**Result Codes**  
Displayed result codes: X4  
Additional result codes: ARQ/Modulation/Compression

**Echo**  
 Local command echo  
 Online mode local echo

**Flow control (TX/RX):** None  
**DTE baud rate:** Fixed

Save To Modem    Load Profile    Save Profile    Display AT Commands

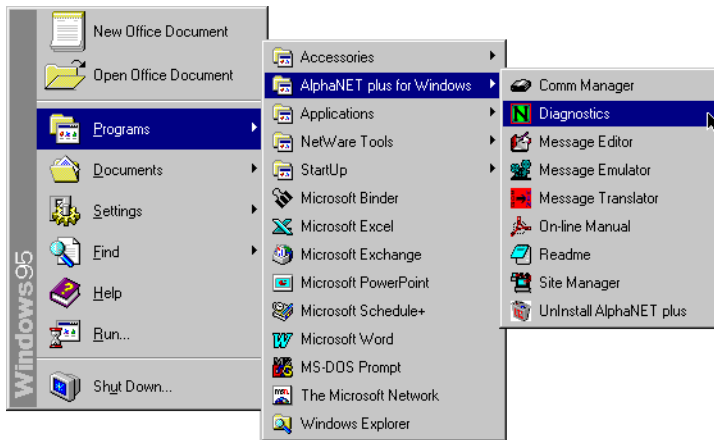
*Ignore DTR should be selected.*

*Flow control should be None*

## Modem configuration - Plan B

If you do not have the US Robotics® *Control Center* software, follow the steps below to set up the Receiving modem. The Transmitting modem requires no special setup.

1. Use either the *Diagnostics* program (included with AlphaNET software) or Microsoft's HyperTerminal software to send the special AT command to the Receiving modem.
2. Connect the Receiving modem to your computer as shown in Figure 1 on page 2.
3. With the modem turned off, change the modem's DIP switches as shown in Figure 2 on page 3.
4. Start the AlphaNET software *Diagnostics* program:
  - In AlphaNET version 1 software, start *Diagnostics* using the *Start* menu:



- In AlphaNET version 2 software, use *Program Files\AlphaNET 2.0 \Anetsurf.exe*.
5. Start the *Diagnostics* program, select *Settings*, and enter the AT command exactly as shown in Table 1, "Special AT command," on page 4:

Delete this default AT command and enter the command shown in Table 1 on page 4.

