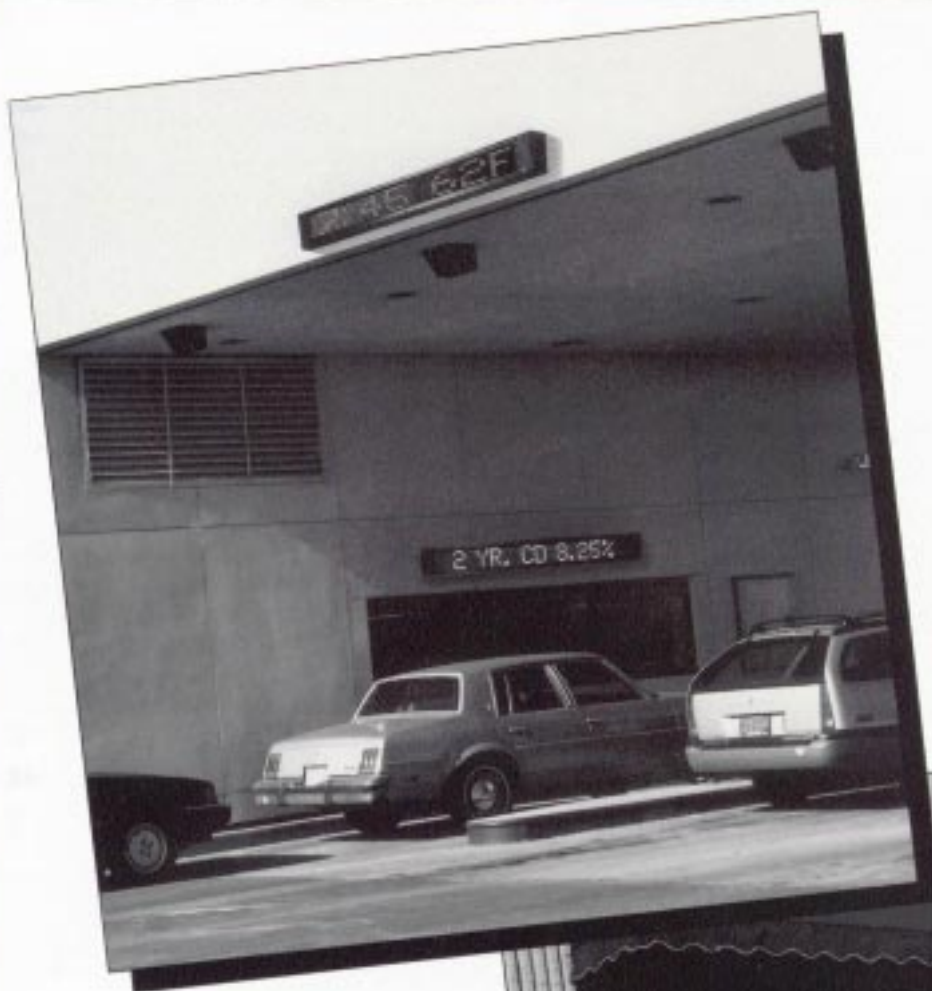


ALPHA

790i OUTDOOR DISPLAY 



Introducing the ALPHA 790i Outdoor Incandescent Display; the newest design in outdoor message center communications. Reliable, day-after-day performance, quality U.S.A. construction, and cost-effective design now allow unlimited possibilities in outdoor incandescent signage.

ENGINEERING YOU CAN DEPEND ON

Each Outdoor Incandescent Message Center features a 7 x 90 dot matrix that displays one line of 15 characters, single or double faced, 6.3" characters, and 1.25 watt, low voltage, wedge based lamps for extended life and easy replacement.

Designed for a wide variety of outdoor applications, every Alpha Outdoor Message Center comes with these features and more:

- Gold plated, corrosion resistant lamp sockets
- Individual, self-contained power supply
- Rugged, quick connect electrical hook-up
- Battery backed time-of-day clock
- Easy Key with Automode programming

- Built-in overheating protection
- Automatic time-of-day dimming for night time messaging

GO WITH THE LEADER

When you purchase an Alpha Outdoor Incandescent Message Center, you're going with a leader in the industry. AMS offers a decade of design, development, and manufacturing of visual information display systems throughout the world. AMS provides extensive technical support and thorough after sale back-up.

PROGRAMMING

Exclusive Easy key operation with Automode eliminates the need to learn complicated programming procedures. Within seconds, the operator can use the handheld keyboard to create exciting visual messages that cannot be ignored.

NETWORKING

Compatible with optional AlphaVision II communications system. A PC/MS-DOS software program provides the capability to control an entire network of Alpha message centers.

ALPHA 790i Outdoor Display

1. Fifteen character, single line display

2. Battery backed, time-of-day clock

3. Infrared receiver for remote programming

4. Automatic time-of-day dimming

5. Corrosion resistant, gold plated lamp sockets

7. Serial interface for PC programming

9. Built-in overheating protection

6. 7200 character memory capacity

8. Low power consuming, 1.25 watt bulbs

10. Black textured finish metal cabinet





NO TOOLS NECESSARY: Front loading bulb design makes bulb replacement quick and easy.

TYPICAL APPLICATIONS:

- Financial Institutions
- Gas Stations
- Convenience Stores
- Factories
- Schools/Universities
- Auto Dealers
- Hotels and Motels
- Car Washes
- Parking Garages/Structures



TYPICAL USES:

- Drive Thrus
- Store Fronts
- Employee Entrances
- Gymnasiums
- Parking Lots
- Point-of Purchase

STANDARD FEATURES:

- PC or Handheld IR Keyboard Programming
- Versatile 7 Dot x 90 Dot Matrix
- 1.25 Watt Long Life Wedge Based Lamps
- Gold Plated, Corrosion Resistant Lamp Sockets
- Easy Front Loading Lamp Replacement
- Self Contained Power Supply
- Automatic Night Time Dimming
- Built-In Overheating Protection
- Temperature Probe
- 5 Variable Display Speeds
- 26 Different Modes
- Quality U.S.A. Craftsmanship
- 8K Ram Memory

DRIVE THRU 7-7PM

FREE CHECKING

14:15 90

Cheeseburger .99

2 Liter COLA .99

FREE WASH w/ FILL

QC MEETING 8AM

THINK SAFETY



Messages are entered through a wireless remote keyboard.



The ALPHA 790i Incandescent Message Center is ideal for business entryways.

SPECIFICATIONS

POWER CONSUMPTION:	115 VAC Integral power supply	CABINET WEIGHT:	80 lbs.
CURRENT CONSUMPTION:	7 amps maximum	CABINET MATERIAL:	.080 Aluminum
CABINET:	Black texture finish metal enclosure	CHARACTERS PER SCREEN:	15 characters per line 7 wide characters per line (approx.)
DISPLAY TECHNOLOGY:	Incandescent	MEMORY CAPACITY:	7200 characters
CHARACTER SIZE:	6.3" characters	INTERFACE:	RS232, RS422, RS485
CABINET SIZE:	94.0"L x 6.28"W x 10.5"H	DISPLAY ARRAY:	90 columns, 7 rows
TEMPERATURE:	Accuracy: +/- 4°F Range: -25°F to +120°F		

Distributed by:

Alpha-American Programmable Signs

3460 Borreson Street
San Diego, CA 92117
800-223-4636
858-273-3036
Fax: 858-273-3040

Communicating at the Speed of Light!

